

# TEST REPORT

**Applicant** : ANJI SHENGXING OFFICE FURNITURE CO.,LTD

**Address** : TANGPU INDUSTRIAL PARK ,ANJI COUNTY ,ZHEJIANG PROVINCE ,CHINA

**Sample description** : UKFR- GREY PU

**Manufacturer** : Anji Shengxing Office Furniture Co.,ltd

**Country of origin** : China

**Country of destination** : UK

**Sample received date** : 26 - Feb - 2026

**Turn around time** : 26 - Feb - 2026 to 04 - Mar - 2026

The following test item(s) was/were performed on submitted sample(s) and/or component(s) confirmed by applicant

TEST REQUESTED	TEST METHOD/REGULATION	RESULT
UK Furniture and Furnishings (Fire) (Safety) Regulations 1988 (amended 1989,1993, 2010 and 2025) - Schedule 4 Part I: The Cigarette Test	BS 5852: Part 1: 1979 Smouldering cigarette source	Pass
UK Furniture and Furnishings (Fire) (Safety) Regulations 1988 (amended 1989,1993, 2010 and 2025) - Schedule 5 Part I: The Match Test	BS 5852: Part 1: 1979 Butane flame ignition source 1	Pass

*Samples are obtained by express delivery, Results obtained refer only to samples, products or material received in Laboratory, as described in point related to sample description, and tested in conditions shown in present report. Eurofins Product Testing Service (Hangzhou) Co., Ltd ensures that this job has been performed according to our Quality System and complying contract and legal conditions. Unless otherwise stated from the customer, regulation or the standard specification, Eurofins will apply it in accordance with ILAC G8:09/2019-(binary statement for simple acceptance rule). If you happen to have any comments, please do it by sending email to [info.hz@cpt.eurofinscn.com](mailto:info.hz@cpt.eurofinscn.com) and referring to this report number. Reproduction of this document is only valid if it is done completely and under the written permission of Eurofins Product Testing Service (Hangzhou) Co., Ltd. If you happen to have any complaints, please do it by sending email to [chinacomplaint.hz@cpt.eurofinscn.com](mailto:chinacomplaint.hz@cpt.eurofinscn.com) and referring to this report number.*

**Eurofins (Hangzhou) contact information**

**Customer service:** [Stacey.Zhang@cpt.eurofinscn.com](mailto:Stacey.Zhang@cpt.eurofinscn.com)/ +86 571 87203730

**Sales specialist:** [Roy.Feng@cpt.eurofinscn.com](mailto:Roy.Feng@cpt.eurofinscn.com)/ +86 13665199521

\*\*\*\*\* FOR FURTHER DETAILS, PLEASE REFER TO THE FOLLOWING PAGE(S) \*\*\*\*\*

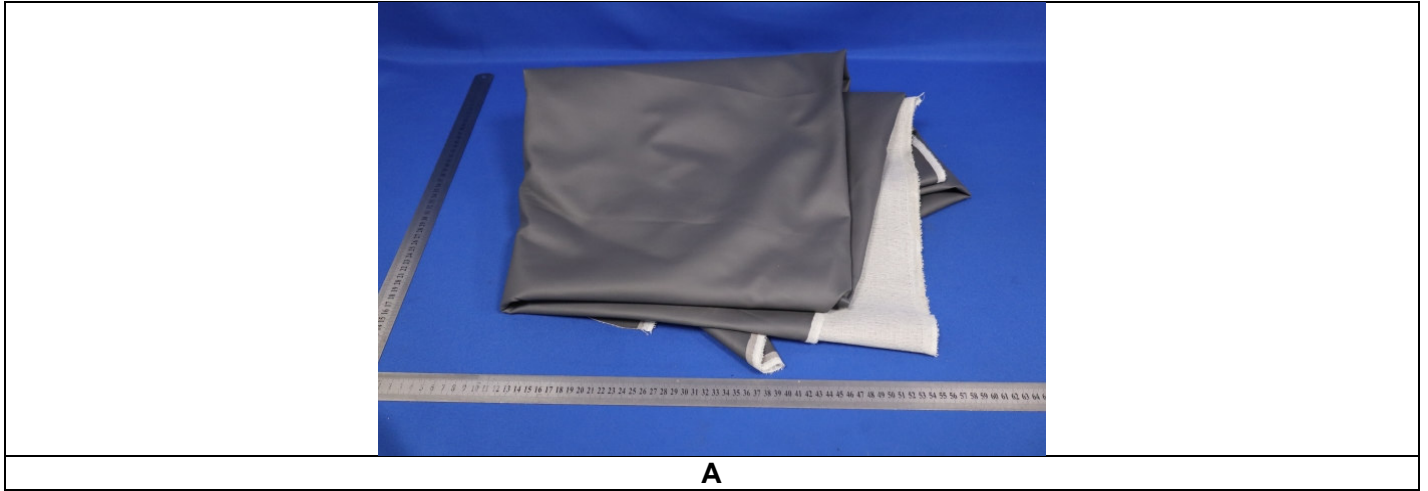
Signed for and on behalf of  
Eurofins Product Testing Service (Hangzhou) Co., Ltd

*Mark Chen*



Mark Chen  
Physical Lab Manager

**SAMPLE PHOTO(S)**



**EFHZ26022807-CG-01**

\*\*\*TO BE CONTINUED\*\*\*

## TEST RESULT

### UK Furniture and Furnishings (Fire) (Safety) Regulations 1988 (amended 1989,1993, 2010 and 2025) - Schedule 4 Part I, The Cigarette Test

Test method: BS 5852: Part 1: 1979

Ignition source: Smouldering cigarette source

Conditioning: 72 hours indoor ambient and at least 16 hours of 20±5°C, 50±20% relative humidity.

Testing Atmosphere: 15-30°C, 20-70% Relative Humidity

Per Treatment: Water-Soaking procedure was conducted in accordance with the modified method of BS 5651:1978 for sample.

**Test results:**

The following test results relate only to the ignitability of the materials under the particular conditions of test; they are not intended as a means of assessing the full potential fire hazard of the materials in use.

Ignitability performance index: **Non-ignition / Pass**

Criteria of failure (Clause 9 of BS 5852: Part 1: 1979)

Progressive smouldering failure	1 <sup>st</sup> Test	2 <sup>nd</sup> Test
Progressive smoldering (an exothermic oxidation not accompanied by flaming which is self-propagating) of the cover is observed at any time within a period of one hour of the placement of the cigarette.	N.O.	N.O.
Flaming failure	1 <sup>st</sup> Test	2 <sup>nd</sup> Test
Any flaming of the cover is observed at any time within a period of one hour of the placement of the cigarette	N.O.	N.O.

**Remark:**

1. N.O. denotes: Not observed

\*\*\*TO BE CONTINUED\*\*\*

## TEST RESULT

**UK Furniture and Furnishings (Fire) (Safety) Regulations 1988 (amended 1989,1993, 2010 and 2025) - Schedule 5 Part I, The Match Test**

Test method: BS 5852: Part 1: 1979

Ignition source: Butane flame ignition source 1

Burn period: 20 seconds

Conditioning: 72 hours indoor ambient and at least 16 hours of 20±5°C, 50±20% relative humidity.

Testing Atmosphere: 15-30°C, 20-70% Relative Humidity

Per Treatment: Water-Soaking procedure was conducted in accordance with the modified method of BS 5651:1978 for sample.

Test results:

The following test results relate only to the ignitability of the materials under the particular conditions of test; they are not intended as a means of assessing the full potential fire hazard of the materials in use.

Ignitability performance index: **Non-ignition / Pass**

Criteria of failure (Clause 9 of BS 5852: Part 1: 1979)

Progressive smouldering failure	1 <sup>st</sup> Test	2 <sup>nd</sup> Test
Any progressive smoldering (an exothermic oxidation not accompanied by flaming which is self-propagating) in the cover after 120 seconds of the removal of the burner tube.	N.O.	N.O.
Flaming Failure		
Flaming Failure	1 <sup>st</sup> Test	2 <sup>nd</sup> Test
Any flaming in the cover after 120 seconds of the removal of the burner tube	N.O.	N.O.

Remark:

1. N.O. denotes: Not observed

\*\*\*END OF THE REPORT\*\*\*